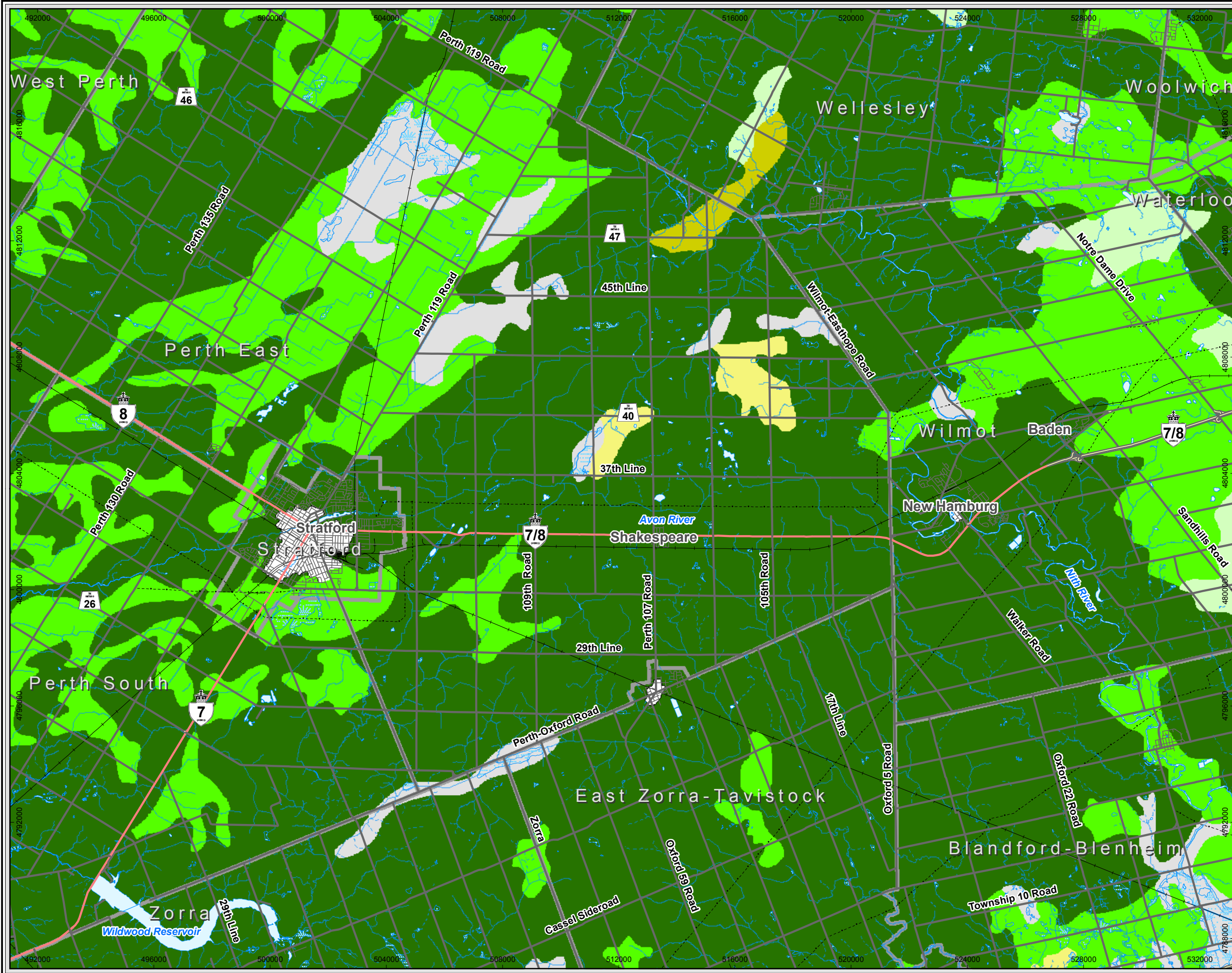


Map Document (N:\Projects\2007\70347\2008\Final\GIS\Spatial\MXDs\Revised\Mapa\70347AgriculturalSoils-11x17.mxd)  
 05/06/2008 - 8:04:20 AM



**Legend**

- Intermittent Stream
- Permanent Stream
- Transmission Line
- Railway
- Freeway
- Highway
- Major Road
- Local Road
- ▭ Municipal Division
- ▭ Waterbody
- ▭ Cartographic Wetland

**Soil Capability for Agriculture**

**Prime Agricultural Lands**

- Class 1 *no significant limitations in use for crops*
- Class 2 *moderate limitations that restrict the range of crops or require moderate conservation practices*
- Class 3 *moderately severe limitations that restrict the range of crops or require special conservation practices*

**Non-prime Agricultural Lands**

- Class 4 *severe limitations that restrict the range of crops or require special conservation practices or both*
- Class 5 *very severe limitations that restrict their capability to producing perennial forage crops and improvement practices are feasible*
- Class 6 *capable of only producing perennial forage crops and improvement practices are not feasible*
- Class 7 *no capability for arable culture or permanent pasture*

**Other**

- ▭ Urban Area defined in CLI mapping
- ▭ Organic Soil

Basemapping from Ontario Ministry of Natural Resources

Highway 7/8 Transportation Corridor Planning and Class EA Study

**Agricultural Soils**

June 2008  
Project 70347

Ontario  
Gartner Lee

Exhibit 4.5  
TH engineers architects planners